

# ***AIRLECTRIC***<sup>\*</sup>

**Mains Heating System for the Airtronic D2 / D4**



## **Eberspächer Announce the Release of the Airlectric Mains Duct Heating System**

Customers are now able to add an advanced mains heating capability to their conventional Air heating systems. The unit is extremely light and compact and fully compatible with both the Airtronic D2 and D4 range of diesel heaters.

The Airlectric can be specified with motorhome manufacturers or purchased and installed through the Eberspächer dealer network.



**Eberspächer**  
A world of comfort

# AIRLECTRIC\*

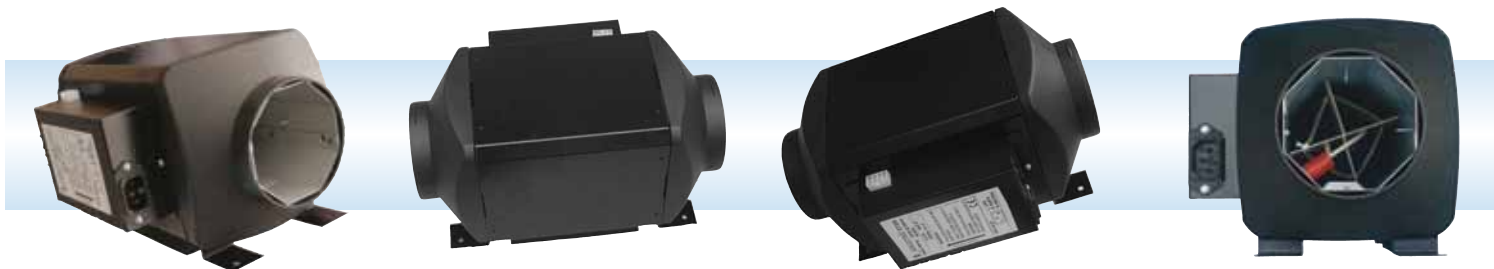
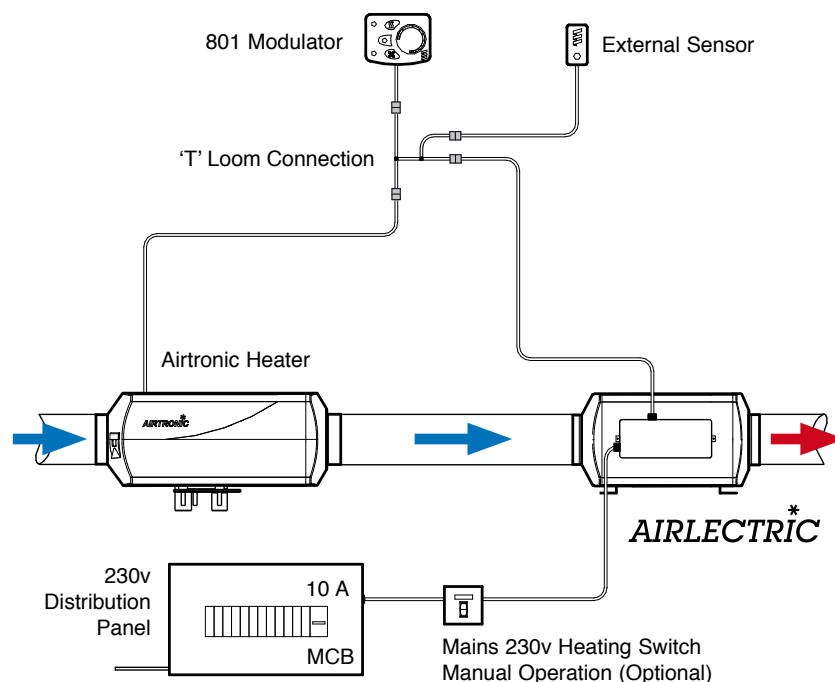
## Features and Benefits

- \* 1.4kW in 90mm ducting for Airtronic D4 and 1kW in 75mm for Airtronic D2.
- \* Compact size (265 x 158 x 120mm).
- \* Unlike other electric heating systems, the unit uses a low mass heating element to provide the quickest possible warm-up time. This technology also reduces weight (The 75mm version weighs in at only 1.6kg).
- \* An automatic mode is available as an option, which will switch seamlessly from diesel to electric heating and back again as and when mains power is available.
- \* The system has been designed to allow fitting as a retrofit option to existing D2 and D4 12v installations, so that customers can enjoy the benefits of electric heating now.
- \* The integrated electronic control permits operation from the existing Airtronic modulator control for simplicity in operation.
- \* Airlectric is an intelligent system utilizing the Airtronic blower motor, and more than one unit can be incorporated into larger installations. These can communicate with each other to provide heat where needed without activating current trips. No other system can do this.
- \* The heaters can be linked to a managed control system, which is capable of momentarily switching off the heating whilst other mains loads (e.g. a kettle) are being used.

## Technical Specification

Heater	Airlectric	Airlectric M
Version	1kW Duct Heater 75mm	1.4kW Duct Heater 90mm
Heating Medium	Air	Air
Rated voltage	230v ~ (50 – 60Hz)	230v ~ (50 – 60Hz)
Current Consumption	4 amps @ 230v	5.65 amps @ 230v
Dimensions	265 x 158 x 120mm (max)	275 x 175 x 150mm (max)
Heat Rating Factor	2	2
Approval	EN 60335-1:2002/A1: 2004 EN 60335-2-30:2003	EN 60335-1:2002/A1: 2004 EN 60335-2-30:2003
Weight	1.60kg	1.85kg

## How the System Works



### Eberspächer (UK) Ltd.

Headlands Business Park, Salisbury Road,  
Ringwood, Hampshire BH24 3PB

Tel: (01425) 480151 – Fax: (01425) 480152

www.eberspacher.com – enquiries@eberspacher.com